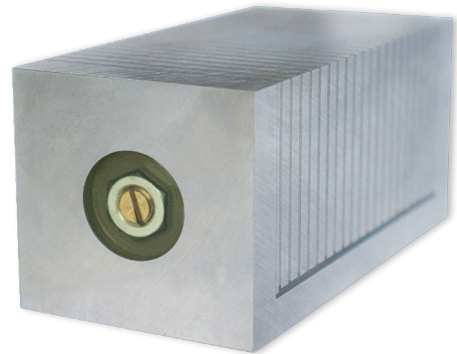


MSB

Permanent Clamping Magnets

The permanent clamping magnets MSB are used for clamping shaped workpieces. A very strong version is also available for clamping tungsten carbide for example inserts or blanks.



MSB

Applications

- ☒ For clamping of shaped parts
- ☒ For grinding of carbide materials (type SmCo)

Features

- ☒ Permanently magnetic
- ☒ Not switchable
- ☒ Mechanically machineable

Technical data	Dimensions (L x W x H) [mm]	Magnetic adhesive areas	Item no.	Price [€]
MSB	100x100x50	1 x 100x100 mm	314	425,00
MSB	100x50x50	2 x 100x50 mm	315	265,00
MSB	100x25x25	2 x 100x25 mm	316	185,00
For grinding of tungsten carbide				
MSB...SmCo	100x100x50	2 x 100x50 mm	33477	1.490,00
MSB...SmCo	100x50x50	1 x 100x50 mm	33478	790,00
MSB...SmCo	100x25x25	2 x 100x25 mm	33479	495,00

Prices are subject to change