

Accessories suitable for

# KKE 1 | KKE 2 | ASO 600-ASL



## Chamfer cutters without bore



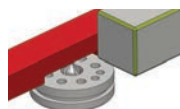
10372



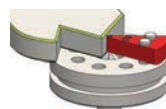
11134



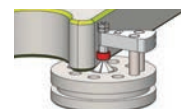
10384



Guide ruler

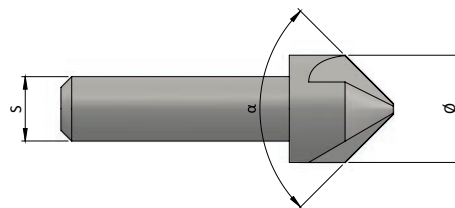


Guide ball bearing



Exchange insert

Field of application	$\alpha$	$\emptyset$	S	Z	Coating	FL	fixed or height adjustable [mm]				with guide ball bearing [mm]		No.
							R 0,8	R 1,2	R 1,5	R 2,1	$\emptyset 3$	$\emptyset 4$	
Alu, Steel	90°	6	6	3	No	X	X	X	X	X	X	X	10372
Alu, Steel	90°	6	6	3	No	X	X	X	X	X	X	X	70309
Alu, Steel	60°	6	6	3	No	X	X	X	X	X	X	X	26208
Alu, Steel	120°	6	6	3	No	X	-	X	X	X	X	X	39954
Alu	90°	6	6	3	No	X	X	X	X	X	X	X	10377
Steel	90°	6	6	5	Yes	X	X	X	X	X	X	X	70308
Steel	90°	6	6	5	Yes	X	X	X	X	X	X	X	11134
Stainless steel	90°	6	6	5	Yes	X	X	X	X	X	X	X	10378
Alu, Steel	90°	10	6	3	Nein	X	X	X	X	X	X	X	10384



## Chamfer cutters with fixed guide pin



10948

Field of application	$\alpha$	$\emptyset$	S	Z	Coating	$\emptyset$ Guide pin	No.
Alu, Steel	90°	6	6	3	No	2	10948



\* Explanation of the abbreviations:  $\alpha$  = point angel, R = radius, S = shaft diameter, Z = teeth, FL = guide ruler, FK = guide ball bearing, FZ = guide pin

Accessories suitable for

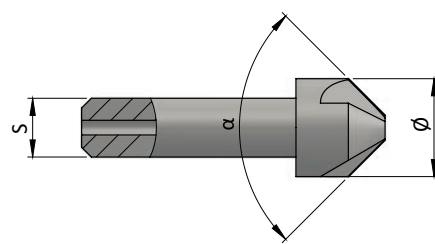
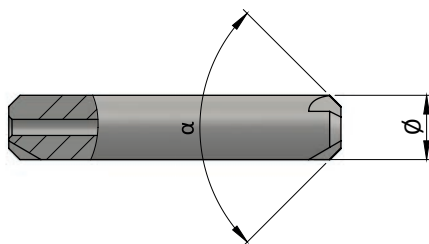
KKE 1 | KKE 2 |  
ASO 600-ASL



### Chamfer cutters with bore



Field of application	$\alpha$	$\emptyset$	S	Z	Coating	FZ 2,6	FK 3	FK 4	FK 5	FK 6	No.
Alu, Steel	90°	6	6	3	No	X	X	X	X	-	10374
Alu	90°	6	6	3	No	-	-	X	X	-	10375
Steel	90°	6	6	5	Yes	-	-	X	X	-	39041
Stainless steel	90°	6	6	5	Yes	-	-	X	X	-	43252
Laser-edge	90°	6	6	20	Yes	-	-	X	X	-	41885
Alu, Steel	90°	10	6	3	No	X	X	X	X	X	10386
Alu	90°	10	6	3	No	-	-	X	X	X	47698
Alu	130°	10	6	3	No	-	-	X	X	X	57622
Alu	140°	10	6	3	No	-	-	X	X	X	57624
Steel	90°	10	6	6	Yes	-	-	X	X	X	36828
Steel	120°	10	6	5	Yes	-	-	X	X	X	44908
Stainless steel	60°	10	6	5	Yes	-	-	X	X	X	23575
Stainless steel	90°	10	6	5	Yes	-	-	X	X	X	45920
Steel <65 HRC	90°	10	6	20	Yes	-	-	-	X	X	38344
Steel <65 HRC	120°	10	6	20	Yes	-	-	-	X	X	71231



\* Explanation of the abbreviations:  $\alpha$  = point angel, R = radius, S = shaft diameter, Z = teeth, FL = guide ruler, FK = guide ball bearing, FZ = guide pin

Accessories suitable for

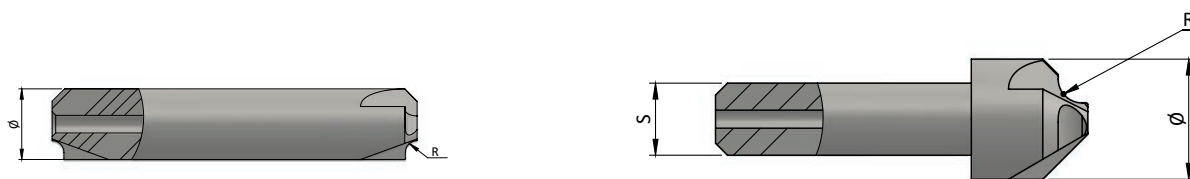
KKE 1 | KKE 2 |  
ASO 600-ASL



### Radius cutters with bore



Field of application	$\alpha$	$\emptyset$	S	Z	Coating	FZ 2,6	FK 3	FK 4	FK 5	FK 6	No.
Alu	0,5	10	6	3	No	-	-	X	-	-	62244
Alu	1,0	6	6	3	No	-	X	-	-	-	67584
Alu	1,5	6	6	3	No	-	X	-	-	-	67585
Alu	2,0	10	6	3	No	-	-	X	-	-	62247
Alu	2,5	10	6	5	No	-	-	X	-	-	62248
Alu	3,0	10	6	5	No	-	-	X	-	-	62249
Steel	0,5	6	6	4	Yes	-	X	-	-	-	31363
Steel	1,0	6	6	5	Yes	-	X	-	-	-	29239
Steel	1,5	6	6	4	Yes	-	X	-	-	-	67586
Steel	2,0	10	6	4	Yes	-	-	X	-	-	50478
Steel	2,5	10	6	4	Yes	-	-	X	-	-	62242
Steel	3,0	10	6	5	Yes	-	-	X	-	-	62243
Stainless steel	0,5	6	6	6	Yes	-	-	X	-	-	43212
Stainless steel	1,0	6	6	5	Yes	-	X	-	-	-	17517
Stainless steel	1,5	6	6	5	Yes	-	X	-	-	-	21383
Stainless steel	2,0	10	6	5	Yes	-	-	X	-	-	65169



\* Explanation of the abbreviations:  $\alpha$  = point angel, R = radius, S = shaft diameter, Z = teeth, FL = guide ruler, FK = guide ball bearing, FZ = guide pin

Accessories suitable for

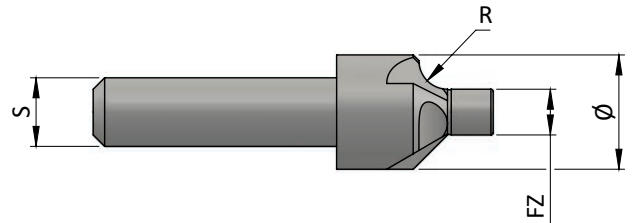
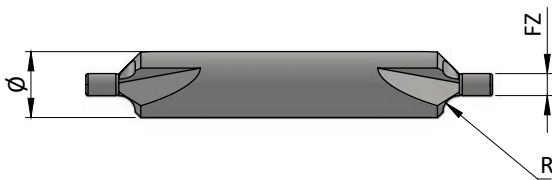
KKE 1 | KKE 2 |  
ASO 600-ASL



Radius cutters with fixed guide pin



Field of application	$\alpha$	$\emptyset$	S	Z	Coating	$\emptyset$ Guide pin	No.
Alu, Plastic, Steel	0,4	6	6	3	No	2	44193
Alu, Plastic, Steel	1,0	6	6	3	No	2	37227
Alu, Plastic, Steel	1,5	6	6	3	No	2	10382
Alu, Plastic	2,0	10	6	2	No	4	38197
Alu, Plastic	3,0	12	6	2	No	4	38198
Alu, Plastic	4,0	14	6	2	No	4	38199
Alu, Plastic	5,0	16	6	2	No	4	45046



Flush milling cutter with bore



Field of application	$\alpha$	$\emptyset$	S	Z	Coating	FZ 2,6	FK 3	FK 4	FK 5	FK 6	No.
Alu, Steel	0°	5	6	4	No	-	-	-	X	-	17528
Alu, Steel	0°	6	6	4	No	-	-	-	-	X	17526

\* Explanation of the abbreviations:  $\alpha$  = point angel, R = radius, S = shaft diameter, Z = teeth, FL = guide ruler, FK = guide ball bearing, FZ = guide pin

Accessories suitable for

KKE 1 | KKE 2 |  
ASO 600-ASL



## Backward cutters



10862

Field of application	$\alpha$	$\emptyset$	S	Z	Coating	No.
Steel, Stainless steel	- 90°	14	6	6	Yes	10862

## Prism cutters for prismatic guide



57669

27823

Field of application	$\alpha$	$\emptyset$	S	Z	Coating	No.
Alu	180°	8	8	3	No	57669
Steel, Stainless steel	180°	8	8	4	Yes	27823

## Guide pin and guide ball bearings



71002



71003



71004



71005



71006

Description	Details	No.
Guide pin	$\emptyset$ 2,6 mm	71002
Guide ball bearing	$\emptyset$ 3,0 mm	71003
Guide ball bearing	$\emptyset$ 4,0 mm	71004
Guide ball bearing	$\emptyset$ 5,0 mm	71005
Guide ball bearing	$\emptyset$ 6,0 mm	71006

\* Explanation of the abbreviations:  $\alpha$  = point angel, R = radius, S = shaft diameter, Z = teeth, FL = guide ruler, FK = guide ball bearing, FZ = guide pin

Accessories suitable for

KKE 1 | KKE 2 |  
ASO 600-ASL



## Accessories



Description	Details	No.
Protection cap	for backward cutters, bore $\varnothing$ 16 mm	50616
Guide finger	bore $\varnothing$ 8 mm, R0,8 mm, fixed	10407
Guide finger	bore $\varnothing$ 8 mm, R1,2 mm, fixed	47383
Guide finger	bore $\varnothing$ 8 mm, R1,5 mm, fixed	52833
Guide finger	bore $\varnothing$ 8 mm, R2,1 mm, fixed	47384
Guide finger height-adjustable	bore $\varnothing$ 12 mm, R0,8 mm, R1,2 mm, R1,5 mm, R2,1 mm	27058
Insert ring	bore $\varnothing$ 8 mm	10410
Insert ring	bore $\varnothing$ 12 mm	10413
Wet/dry vacuum cleaner	AERO 21-21 PC	55611
Adapter suction socket	Alu, for AERO 21-21 PC	49630
Tool box	for contour cutters	35170
Socket wrench	wrench size 3,0	45407
Open end wrench	wrench size 3,0	71279
Prismatic guide	300 mm, for prism cutters $\varnothing$ 8 mm	32024
Prismatic guide	300 mm, for prism cutters $\varnothing$ 8 mm	34553

## Spare parts



Description	Details	No.
Insert ring	bore $\varnothing$ 12mm	70291
Exchange insert	R0,8 for height-adjustable guide finger	69692
Exchange insert	R1,2 for height-adjustable guide finger	67704
Exchange insert	R1,5 for height-adjustable guide finger	67705
Exchange insert	R2,1 for height-adjustable guide finger	67706
Exchange insert	with FK 3 for height-adjustable guide finger	29240
Exchange insert	with FK 4 for height-adjustable guide finger	67703
Collet	$\varnothing$ 6 mm	23420
Collet	$\varnothing$ 8 mm	24093
Union nut		34702
Carbon brush, old		26961
Carbon brush, new		69141
Union nut		26284
Set of Drive belts		4932